



Figure 1. iElegance Series 3S Smart Door Bell
图 1. 睿智系列酒店专业门铃面板

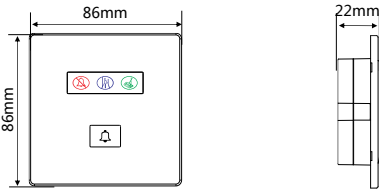


Figure 2. Dimensions - Front View
图 2. 尺寸图 - 正面

Figure 3. Dimensions - Side View
图 3. 尺寸图 - 侧面

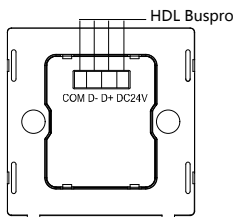


Figure 4. Back View
图 4. 背面图

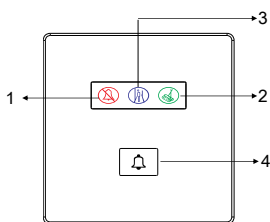


Figure 5. Front View
图 5. 正面图

Overview

iElegance Series 3S Smart Door Bell (See Figure 1) is the matching product of HDL Hotel Control System. Installed by the door of the hotel room, the panel can be controlled by button panel or other matching devices in order to show the user's requirements. It can indicate DND status, ask for room-cleaning and used as doorbell, etc.

Functions

- Door Bell function, if DND is ON, it will be OFF
- DND display: Do not Disturb
- Ask for room-cleaning service
- Back light is adjustable
- Communication: HDL Buspro

Important Notes

- The panel must be installed in the wall box.
- Buspro cable - CAT5R or HDL Buspro/KNX cable.
- It is recommended to adopt Buspro Connection - Series connection (hand-in-hand recommended).

Product Information

Dimensions - See Figure 2 - 3

Back view - See Figure 4

Front view - See Figure 5

Doorbell function can be controlled by other matching devices, for example, panel, or devices that can trigger "universal switch" command. For panel control, button type should be set as "universal switch", and the target should be set to the doorbell.

Universal switch numbers:

1. DND: Universal Switch Number 1
2. Clean: Universal Switch Number 2
3. Wait: Universal Switch Number 3
4. Door Bell for visitors: Universal Switch Number 5

Product installation and disassembly

Installation - See Figure 6 - 8

- Step 1. Install the wall box in the wall.
- Step 2. Fix the base panel into the wall box with screws.
- Step 3. Install the cover on the power interface. Make sure the base panel is connected with the panel cover tightly.

Disassembly - See Figure 9

- Step 1. Insert the panel gap with a slotted screwdriver.
- Step 2. Pry up the panel cover gently and take down the panel.

Safety Precautions

- The installation and commissioning of the device must be carried out by HDL or the organization designated by HDL. For planning and construction of electric installations, the relevant guidelines, regulations and standards of the respective country are to be considered.
- The device should be installed in wall box. HDL does not take responsibility for all the consequences caused by installation and wire connection that are not in accordance with this document.
- Please do not privately disassemble the device or change components, otherwise it may cause mechanical failure, electric shock, fire or body injury.
- Please resort to our customer service department or designated agencies for maintenance service. The warranty is not applicable for the product fault caused by private disassembly.

Package Contents

HDL-MPB03.48*1 / Screw*2 / Datasheet*1

产品概述

睿智系列酒店专业门铃面板(见图1)是酒店客房控制系统的配套产品,安装在酒店房间门口处,通过按键面板或其它设备控制触摸门铃开关面板,显示出房客的要求,如需要清洁或请勿打扰等要求。

功能说明

- 来访门铃功能,当请勿扰显示,门铃功能将会关闭
- 请勿扰显示
- 请清扫提示
- 背光亮度可调
- 通讯方式: HDL Buspro

注意事项

- 面板必须安装暗盒里。
- 总线 - CAT5R 或 HDL Bus/KNX 专用电缆。
- 总线连接 - 推荐使用手拉手的连接方式

产品信息

产品尺寸- 见图 2 - 3

背面图 - 见图 4

正面图 - 见图 5

门铃的功能要由其它设备如面板或可以触发“通用开关”命令的设备来控制。以面板按键控制为例,设置为按键的类型为通用开关,目标为该门铃。通用开关号如下:

1. 请勿打扰: 通用开关号为 1
 2. 请清扫: 通用开关号为 2
 3. 请稍候: 通用开关号为 3
 4. 来访门铃: 通用开关号为 5
- 模块可用/禁用: 通用开关号 6

设备的安装和拆卸

安装 - 见图 6 - 8

- 步骤1. 将底盒安装在墙上。
- 步骤2. 用螺丝将面板底座固定在底盒里。
- 步骤3. 将面盖安装在面板底座上。确保面板底座与面盖连接好。

拆卸面板 - 见图 9

- 步骤1. 用一字螺丝批插入面板缺口。
- 步骤2. 轻撬面盖,即可取下面盖。

安全警告

- 本设备的安装及调试工作必须由我司或我司指派的机构进行。其电气安装的计划和施工,必须遵守当地相关的安全标准和法规。
- 该产品需安装在暗盒内,未按照本说明书进行安装及接线方式的,所造成的一切后果皆与我司无关。
- 请不要私自拆装或更换零部件,否则可能会导致机械故障、电击、火灾或身体伤害。
- 请将一切维修工作交由我司售后部门或指定机构进行,本产品的保修范围不适用于因用户拆卸产品而导致的故障。

装箱清单

HDL-MPB03.48*1 / 螺丝*2 / 说明书*1

Technical Data

Electrical Parameters

Working voltage	12~30V DC
Power consumption	25mA/24V DC
Communication	HDL Buspro
Cable diameter of Buspro terminal	0.6-0.8mm

External Environment

Working temperature	-5°C~45°C
Working relative humidity	≤90%
Storage temperature	-20°C~60°C
Storage relative humidity	≤93%

Specifications

Dimensions	86×86×22 (mm)
Net weight	98g
Housing material	ABS, Aluminum
Installation	Wall box (See Figure 6 - 8)
Protection rating (Compliant with EN 60529)	IP20

Name and Content of Hazardous Substances in Products

Components	Hazardous substances					
	Lead (Pb)	Mercury (Hg)	Cadmium (Cd)	Chromium VI (Cr (VI))	Poly-brominated biphenyls (PBB)	Poly-brominated diphenyl ethers (PBDE)
Plastic	o	o	o	o	o	o
Hardware	o	o	o	o	-	-
Screw	o	o	o	x	-	-
Solder	x	o	o	o	-	-
PCB	x	o	o	o	o	o
IC	o	o	o	o	x	x

The symbol "-" indicates that the hazardous substance is not contained.

The symbol "o" indicates that the content of the hazardous substances in all the homogeneous materials of the component is below the limit requirement specified in the Standard IEC62321-2015.

The symbol "x" indicates that the content of the hazardous substance in at least one of the homogeneous materials of the part exceeds the limit requirement specified in the Standard IEC62321-2015.

HDL Buspro Cable Guide

CAT5/CAT5E	HDL Buspro	HDL Buspro/KNX
Brown/ Orange	24V DC	Red
Brown white/ Orange white	COM	Black
Blue white/Green white	DATA-	White
Blue/ Green	DATA+	Yellow

技术参数

电气参数

工作电压	12~30V DC
总线耗电	25mA /24V DC
通信协议	HDL Buspro
总线端子要求线径	0.6-0.8mm

外部环境

工作温度	-5°C~45°C
工作相对湿度	≤90%
储存温度	-20°C~60°C
储存相对湿度	≤93%

产品规格

尺寸	86×86×22 (mm)
净重	98g
外壳材料	ABS, 压铸铝
安装方式	暗盒安装 (见图6-8)
防护级别 (符合 EN 60529)	IP20

产品中有害物质的名称及含量

部件名称	有害物质					
	铅 (Pb)	汞 (Hg)	镉 (Cd)	六价铬 (Cr (VI))	多溴联苯 (PBB)	多溴二苯醚 (PBDE)
塑胶组件	o	o	o	o	o	o
五金铜件	o	o	o	o	-	-
螺丝组件	o	o	o	x	-	-
焊锡	x	o	o	o	-	-
PCB组件	x	o	o	o	o	o
IC	o	o	o	o	x	x

- : 表示不含有该有害物质。

o : 表示该有害物质在该部件所有均质材料中的含量均在IEC62321-2015规定的限量要求以下。

x : 表示该有害物质至少在该部件的某一均质材料中的含量超出IEC62321-2015规定的限量要求。

总线定义

CAT5/CAT5E	HDL Buspro	HDL Buspro/KNX
棕/橙	24V DC	红
棕白/橙白	COM	黑
蓝白/绿白	DATA-	白
蓝/绿	DATA+	黄

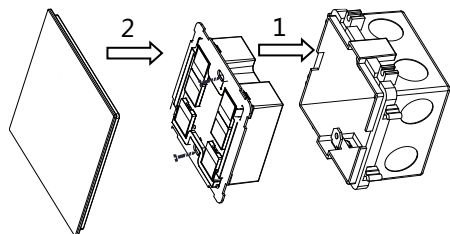


Figure 8. Panel module
图 8. 面板面盖

Figure 7. Power interface
图 7. 电源底座

Figure 6. Wall box
图 6. 底盒

Figure 6 - 8. Installation
图 6 - 8. 安装图

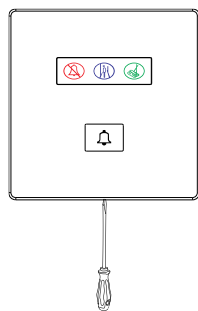


Figure 9. Disassembly
图 9. 拆卸图

技术支持

服务热线: 020-85820195

(工作时间: 9:00-12:00, 13:00-18:00, 星期一至星期五)

邮箱: kfb@hdlchina.com.cn

网址: http://www.hdlchina.com

Technical support

E-mail: support@hdlautomation.com

Website: https://www.hdlautomation.com