

Datasheet

Issued: July 17, 2019
Edition: V1.0.0



Figure 1. Ceiling Mount Lux & Air Quality Sensor

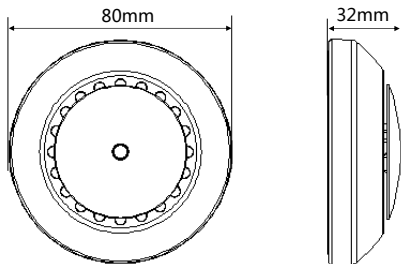


Figure 2. Dimensions - Front View Figure 3. Dimensions - Side View

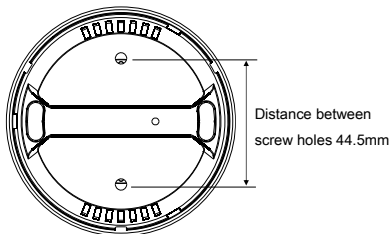


Figure 4. Dimensions - Back View

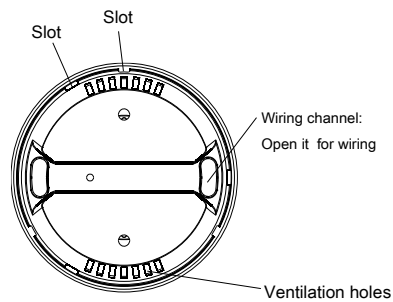
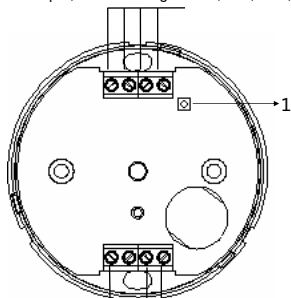


Figure 5. Components - Back View

HDL Buspro, from left to right GND,485-,485+,24V DC



Dry contact 1 Dry contact 2
Figure 6. Wiring

Overview

Ceiling Mount Lux & Air Quality Sensor (See Figure 1) is a multi-function control module which can measure air quality and brightness, and control targets according to the values of lux, dry contact and universal switch.

Functions

- Built-in lux sensor, air quality sensor, 2-channel dry contact input, 2 universal switch input, 1 logic block status input.
- 2 logic relations: OR, AND.
- Up to 24 logic blocks with up to 7 logic input conditions, each logic block can control up to 20 different control targets.
- Different targets can be set when the Logic OR , Logic And are set up.
- Security function, to be used with the security module.
- Light sensing and air quality detection

Important

- Air quality detection: Cigarettes, cooking, hydrogen, carbon monoxide, isobutene, alcohol.
- Buspro cable - CAT5E or dedicated HDL Buspro cable
- Buspro connection - Series connection (hand-in-hand recommended).
- It is recommended that the dry contact cable should be less than 20m.
- Installation - Indoor and ceiling mount.

Product Information

Dimensions - See Figure 2 - 4

Components - See Figure 5

1. Programming button & module indicator, flickers in blue when the module is working properly. Keep pressing the button for 3 seconds, user can read and modify the address of the module via HDL Buspro Setup Tool according to following steps: Address Management→Address Modification.

Wiring - See Figure 6

Installation - See Figure 7 - 9

Step 1. Fix the Ceiling Mount Lux & Air Quality Sensor in the wall box with screws.

Step 2. Put the cover on the sensor.

Safety Precautions

- The installation and commissioning of the device must be carried out by HDL or the organization designated by HDL. For planning and construction of electric installations, the relevant guidelines, regulations and standards of the respective country are to be considered.
- HDL does not take responsibility for all the consequences caused by installation and wire connection that are not in accordance with this document.
- Please do not privately disassemble the device or change components, otherwise it may cause mechanical failure, electric shock, fire or body injury.
- Please resort to our customer service department or designated agencies for maintenance service. The warranty is not applicable for the product fault caused by private disassembly.

Package Contents

HDL-MASLA.2C*1 / Screw*2 / Datasheet*1

Technical Data

Basic Parameters

Working voltage	12~30V DC
Working current	25mA/24V DC
Range of LUX sensor	0~5000Lux
Communication	HDL Buspro
Cable diameter of Buspro terminal	0.6-0.8mm

External Environment

Working temperature	-5°C~45°C
Working relative humidity	≤90%
Storage temperature	-20°C~60°C
Storage relative humidity	≤93%

Specifications

Dimensions	80(Diameter)×32(mm)
Net weight	86.5g
Housing material	ABS
Installation	Ceiling mount (See Figure 7 - 9)
Protection rating (Compliant with EN 60529)	IP20

Name and Content of Hazardous Substances in Products

Components	Hazardous substances					
	Lead (Pb)	Mercury (Hg)	Cadmium (Cd)	Chromium VI (Cr (VI))	Poly-brominated biphenyls (PBB)	Poly-brominated diphenyl ethers (PBDE)
Plastic	o	o	o	o	o	o
Hardware	o	o	o	o	-	-
Screw	o	o	o	×	-	-
Solder	×	o	o	o	-	-
PCB	×	o	o	o	o	o
IC	o	o	o	o	×	×

The symbol “-” indicates that the hazardous substance is not contained.

The symbol “o” indicates that the content of the hazardous substances in all the homogeneous materials of the component is below the limit requirement specified in the Standard IEC62321-2015.

The symbol “x” indicates that the content of the hazardous substance in at least one of the homogeneous materials of the part exceeds the limit requirement specified in the Standard IEC62321-2015.

HDL Buspro Cable Guide

HDL Buspro	HDL Buspro Cable	CAT5/CAT5E
DATA+	Yellow	Blue/Green
DATA-	White	Blue white/Green white
COM	Black	Brown white/Orange white
24V DC	Red	Brown/Orange

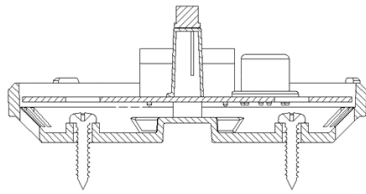


Figure 7

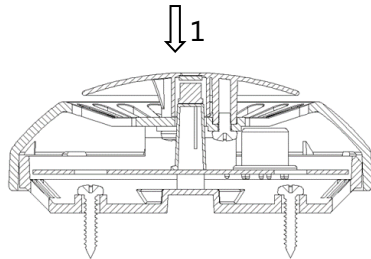


Figure 8

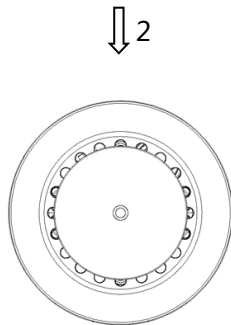


Figure 9

Figure 7 - 9. Installation

Technical support

E-mail: support@hdlautomation.com

Website: <https://www.hdlautomation.com>

©Copyright by HDL Automation Co., Ltd. All rights reserved.
Specifications subject to change without notice.