

Datasheet

Issued: April 7, 2019
Edition: V1.0.0



Figure 1. iElegance Series RF Card Reader & Master Control Panel

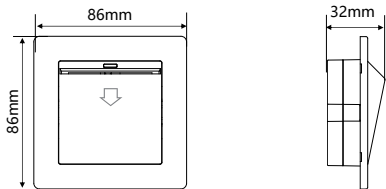


Figure 2. Dimensions - Front View Figure 3. Dimensions - Side View

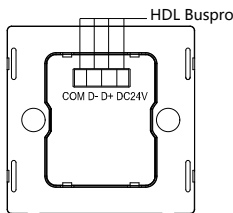


Figure 4. Back View

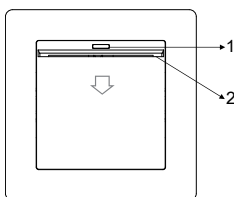


Figure 5. Front View

Overview

iElegance Series RF Card Reader & Master Control Panel (See Figure 1) is a card key switch panel for energy control of hotel guest room and it has built-in MIFARE RF card reader. Guest card, service card, cleaner card, maintenance staff card, manager card, etc. can be recognized by this device.

Functions

- Master card for energy & power management.
- ID recognition, enables different scenes for different types of cards.
- Card types: Guest card, service card, cleaner card, maintenance staff card, manager card, etc.
- Control of mechanical switch can be configured when insert the card or take off the card, maximum 49 targets can be controlled by the switch. Up to 99 targets can be controlled under other key modes.
- Online update.

Important Notes

- The panel must be installed in the wall box.
- Buspro cable - CAT5E or dedicated HDL Buspro cable.
- It is recommended to adopt Buspro connection - Series connection (hand-in-hand recommended).
- Third-party card: Make sure the data area password is opened for using third-party card.

Product Information

Dimensions - See Figure 2 - 3

Back view - See Figure 4

Front view - See Figure 5

Card: New cards have to be assigned by the hotel guest room management software. Totally 5 card types: Guest card, service card, cleaner card, maintenance staff card, manager card. Different targets can be controlled when use different cards.

Indicator: Turns red after power on, turns green after inserting card.

Master card panel: Set panel information should match the card information.

Communication interface and fastener: Connect to power interface.

Product installation and disassembly

Installation - See Figure 6 - 8

Step 1. Install the wall box in the wall.

Step 2. Fix the base panel into the wall box with screws.

Step 3. Install the cover on the power interface. Make sure the base panel is connected with the panel cover tightly.

Disassembly - See Figure 9

Step 1. Insert the panel gap with a slotted screwdriver.

Step 2. Pry up the panel cover gently and take down the panel.

Safety Precautions



- The installation and commissioning of the device must be carried out by HDL or the organization designated by HDL. For planning and construction of electric installations, the relevant guidelines, regulations and standards of the respective country are to be considered.
- The device should be installed in wall box. HDL does not take responsibility for all the consequences caused by installation and wire connection that are not in accordance with this document.
- Please do not privately disassemble the device or change components, otherwise it may cause mechanical failure, electric shock, fire or body injury.
- Please resort to our customer service department or designated agencies for maintenance service. The warranty is not applicable for the product fault caused by private disassembly.

Package Contents

HDL-MPCH01.48*1 / Datasheet*1 / Screw*2 / IC card*1

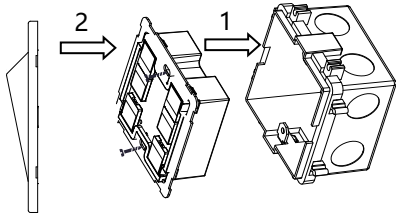


Figure 8. Panel module Figure 7. Power interface Figure 6. Wall box
Figure 6 - 8. Installation

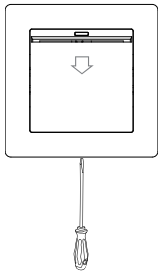


Figure 9. Disassembly

Technical Data

Basic Parameters

Working voltage	12~30V DC
Working current	24mA/24V DC
Communication	HDL Buspro
Supported card type	MIFARE ONE S50 13.56MHz

External Environment

Working temperature	-5°C~45°C
Working relative humidity	≤90%
Storage temperature	-20°C~60°C
Storage relative humidity	≤93%

Specifications

Dimensions	86×86×32 (mm)
Net weight	109g
Housing material	ABS, aluminum
Installation	Wall box (See Figure 6 - 8)
Protection rating (Compliant with EN 60529)	IP20

Name and Content of Hazardous Substances in Products

Components	Hazardous substances					
	Lead (Pb)	Mercury (Hg)	Cadmium (Cd)	Chromium VI (Cr (VI))	Poly-brominated biphenyls (PBB)	Poly-brominated diphenyl ethers (PBDE)
Plastic	o	o	o	o	o	o
Hardware	o	o	o	o	-	-
Screw	o	o	o	×	-	-
Solder	×	o	o	o	-	-
PCB	×	o	o	o	o	o
IC	o	o	o	o	×	×

The symbol “-” indicates that the hazardous substance is not contained.

The symbol “o” indicates that the content of the hazardous substances in all the homogeneous materials of the component is below the limit requirement specified in the Standard IEC62321-2015.

The symbol “x” indicates that the content of the hazardous substance in at least one of the homogeneous materials of the part exceeds the limit requirement specified in the Standard IEC62321-2015.

HDL Buspro Cable Guide

HDL Buspro	HDL Buspro Cable	CAT5/CAT5E
DATA+	Yellow	Blue/Green
DATA-	White	Blue white/Green white
COM	Black	Brown white/Orange white
24V DC	Red	Brown/Orange

Technical support

E-mail: support@hdlautomation.com
Website: <https://www.hdlautomation.com>

©Copyright by HDL Automation Co., Ltd. All rights reserved.
Specifications subject to change without notice.